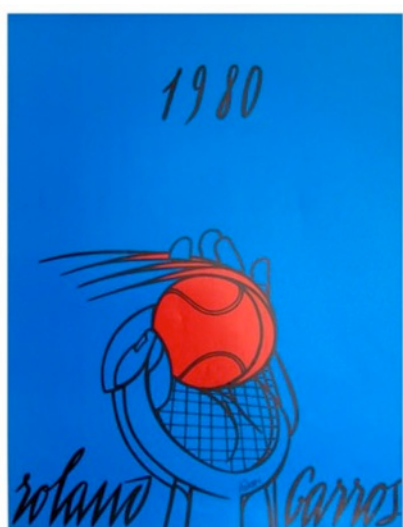


## POUR SE DÉTENDRE

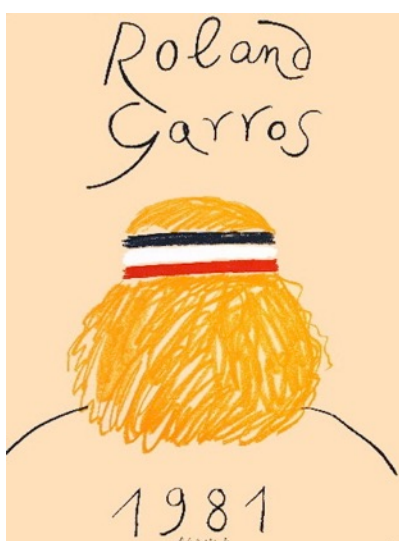
### Les affiches de Roland Garros

En 1980, la Fédération Française de Tennis (FFT) décida de confier la réalisation de l'affiche du tournoi de Roland-Garros à une figure de l'art contemporain. En collaboration avec la Galerie Lelong, cette expérience artistique inédite fut le point de départ d'un rendez-vous annuel désormais impatiemment attendu.

Valerio Adami, artiste phare des années 1970 réalisa la première affiche. Le succès fut immédiat. Depuis, l'aventure se poursuit sans relâche.



1980 - Adami



1981 - Eduardo Arroyo



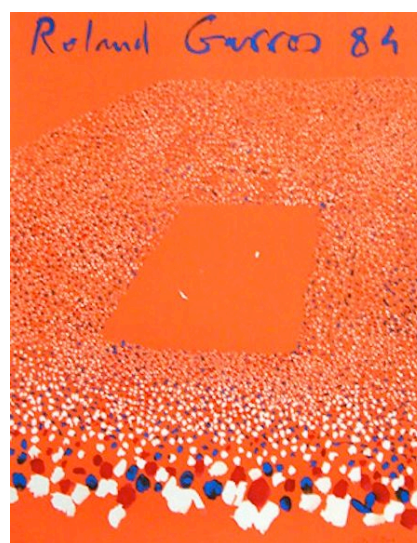
1982 - Folon



1983 - Vladimir Velickovic



1984 - Razzia



1984 - Aillaud





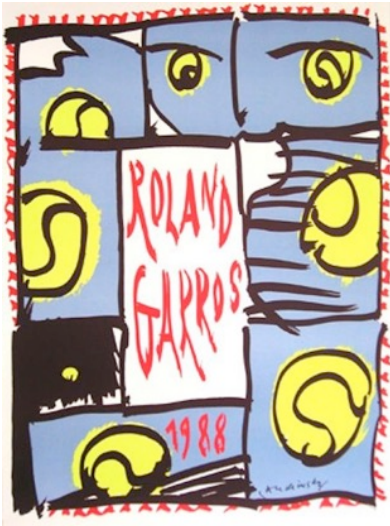
1985 - Jacques Monory



1986 - Kollar



1987 - Titus Carmel



1988 - Alechinsky



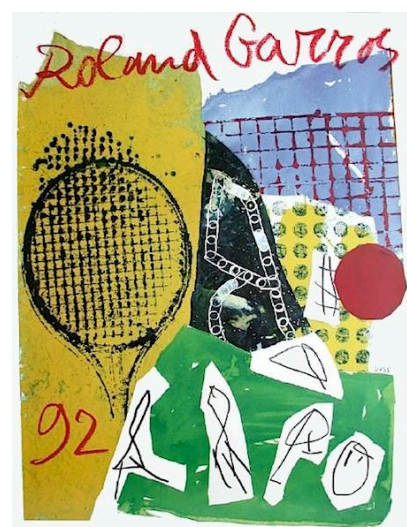
1989 - De Maria



1990 - Garache



1991 - Miro

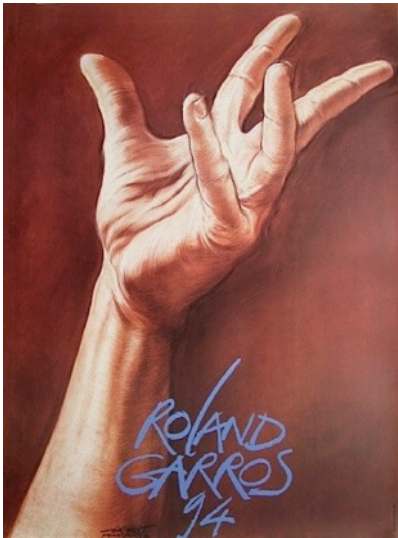


1992 - Voss

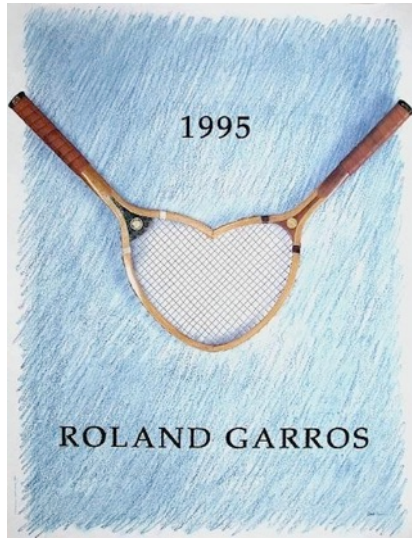


1993 - Jean Le Gac

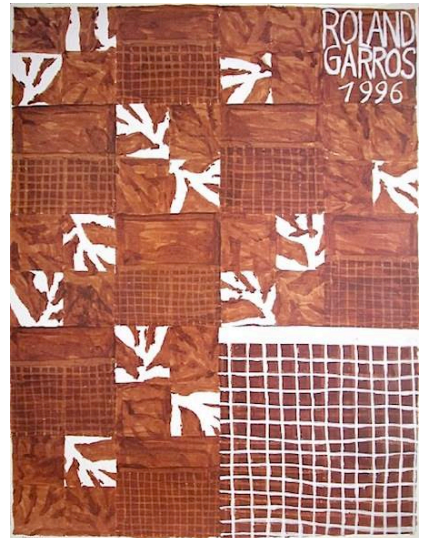




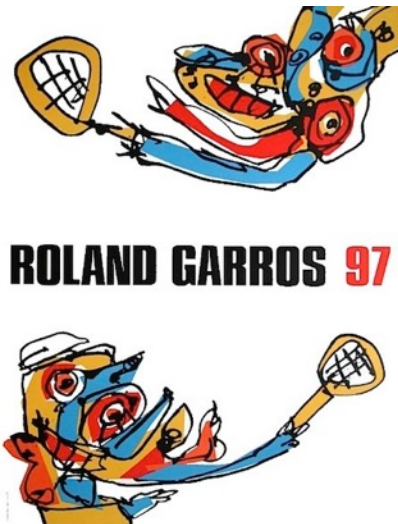
1994 – Pignon-Ernest



1995 - Lipsky



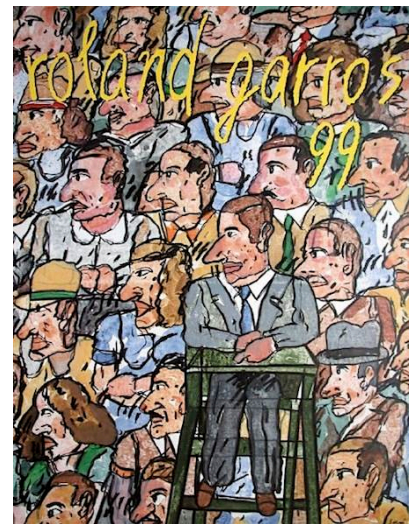
1996 - Meurice



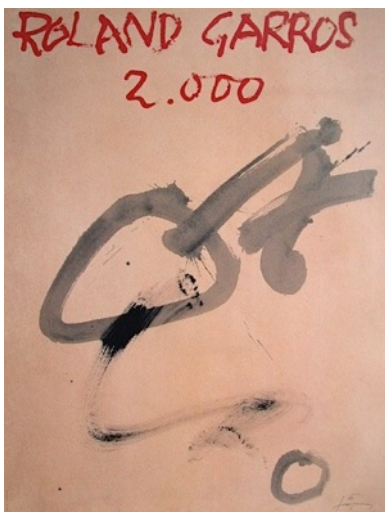
1997 - Saura



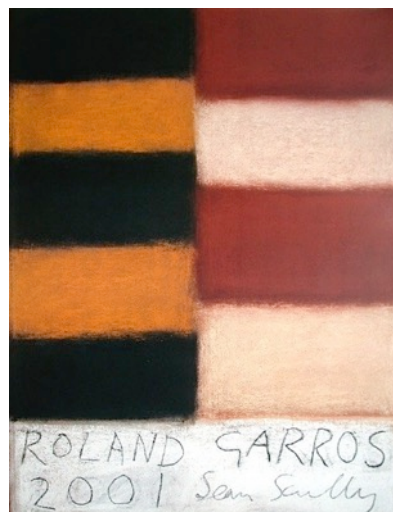
1998 - Télémaque



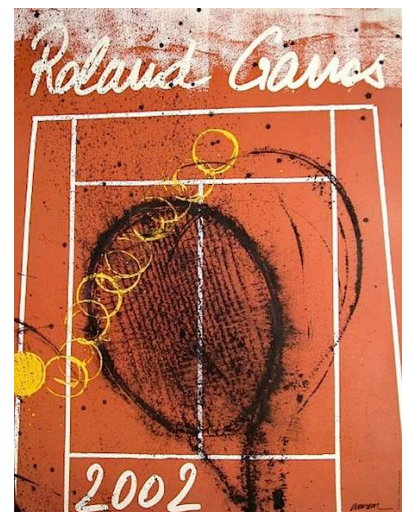
1999 - Ségui



2000 - Tapies

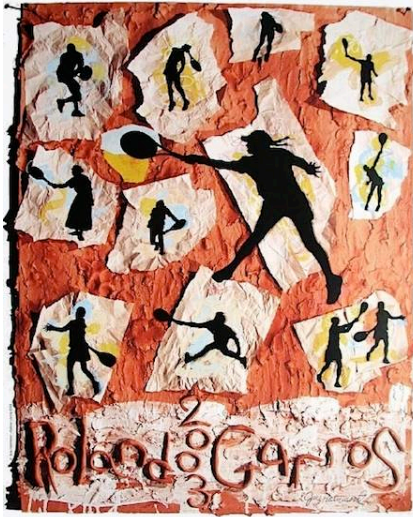


2001 - Scully

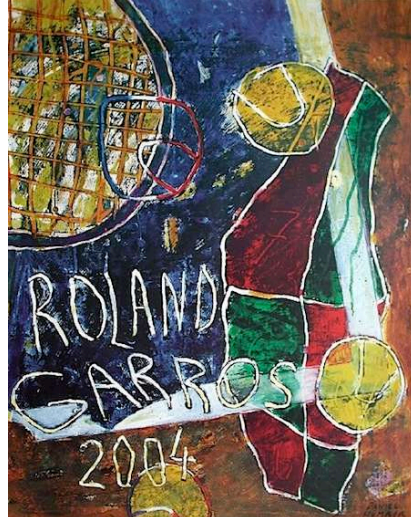


2002 – Arman





2003 - Hammond



2004 - Humair

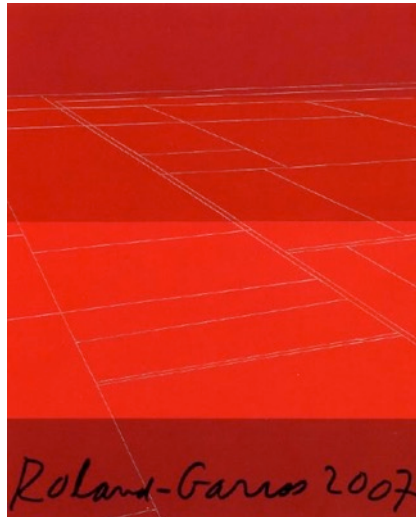


2005 - Plensa



ROLAND-GARROS  
2006

2006- Förg



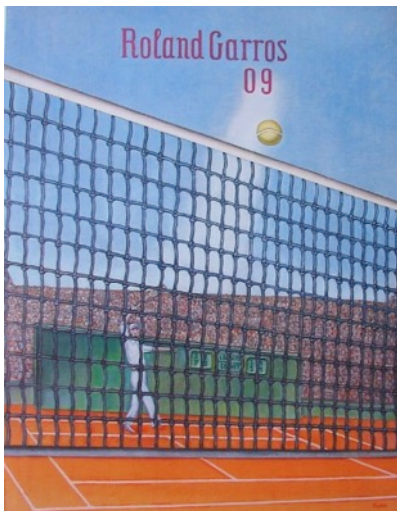
Roland-Garros 2007

2007 - Shepherd

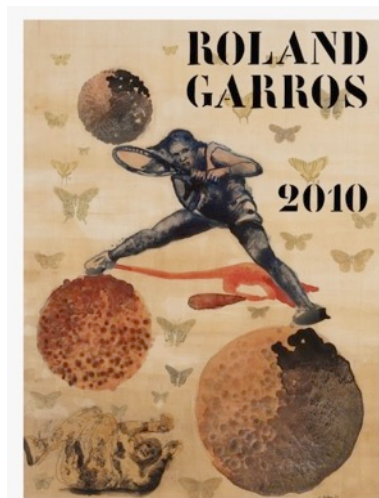


ROLAND GARROS 2008

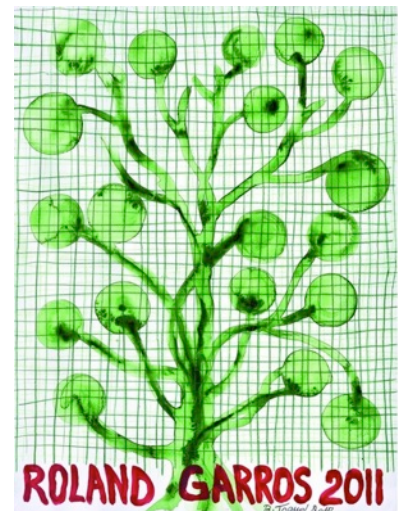
2008 - Rainer



2009 - Klapheck



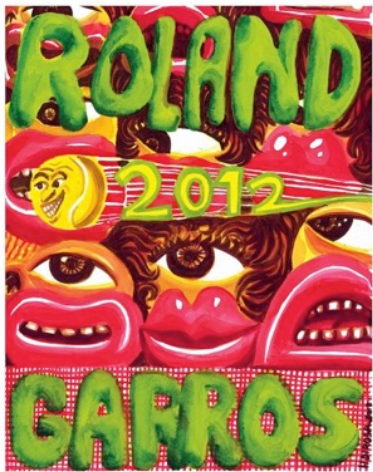
2010 - Malini Nalini



ROLAND GARROS 2011

2011 - Bathélémy Togo





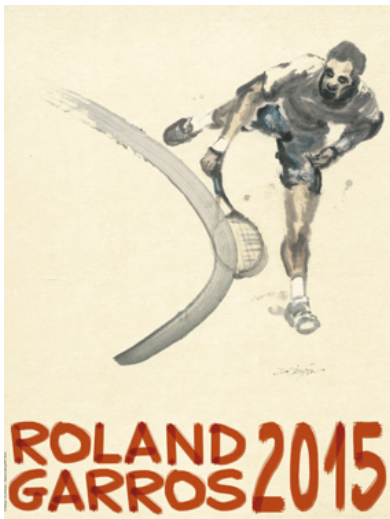
2012 – Hervé Di Rosa



2013 - Nash



2014 - Usle



2015 – Du Zhenjun



2016 - Desgrandchamps





2017 - Muniz